



Parent-Child Interaction Therapy (PCIT) for CFTSS Providers

June 14, 2023



Agenda

- Project Overview
 - Timeline
 - Application
 - Learning Collaborative sessions
- Model Overview
 - Agency Requirements
 - Training & Supervision
 - Tools & Data Collection
 - Equipment
- Funding
- Project Evaluation Expectations
- Q&A



Center for Workforce
Excellence in EBPs

Powered by NYU McSilver

Project Overview



Timeline

- Office hours
 - 6/22 at 12pm
- Application due date
 - 7/10
- Notification date
 - Early/Mid August
- Learning Community Session
 - September/October
- Staff training begins in October/November 2023

Application



Center for Workforce
Excellence in EBPs

Powered by NYU McSilver

Email

- Applicants must email Provider Designation (OMH-Childrens-Designation@omh.ny.gov) to request an application for EBP Authorization. The following information must be provided in the email request:
 - **Program Name**
 - **Number of sites and addresses** (How many sites will be providing the EBP?)
 - **Type of EBP: PCIT, FFT**

Apply

- Based on the information provided in the email request, NYS will provide the applicant with the necessary forms to apply.
- All forms must be completely filled out prior to submission.
- Applications must be submitted to Provider Designation (OMH-Childrens-Designation@omh.ny.gov) by **July 10th**.
- Incomplete or missing forms may result in an applicant not being authorized for a specific cohort but may reapply for future cohorts.

Train

- NYS will notify all applicants of authorization determination.
- If authorized, the provider agency will receive an updated designation letter indicating the approved EBP type and site(s).
- Authorized providers will be connected with information regarding training and other applicable processes.



Learning Collaborative Sessions

- 3 sessions
 - September/October 2023
 - March/April 2024
 - September 2024
- PCIT trainers, CWE staff, and Agency representatives
- Sessions will focus on agency implementation, highlight successful approaches, work to overcome barriers, and share project data



Center for Workforce
Excellence in EBPs

Powered by NYU McSilver

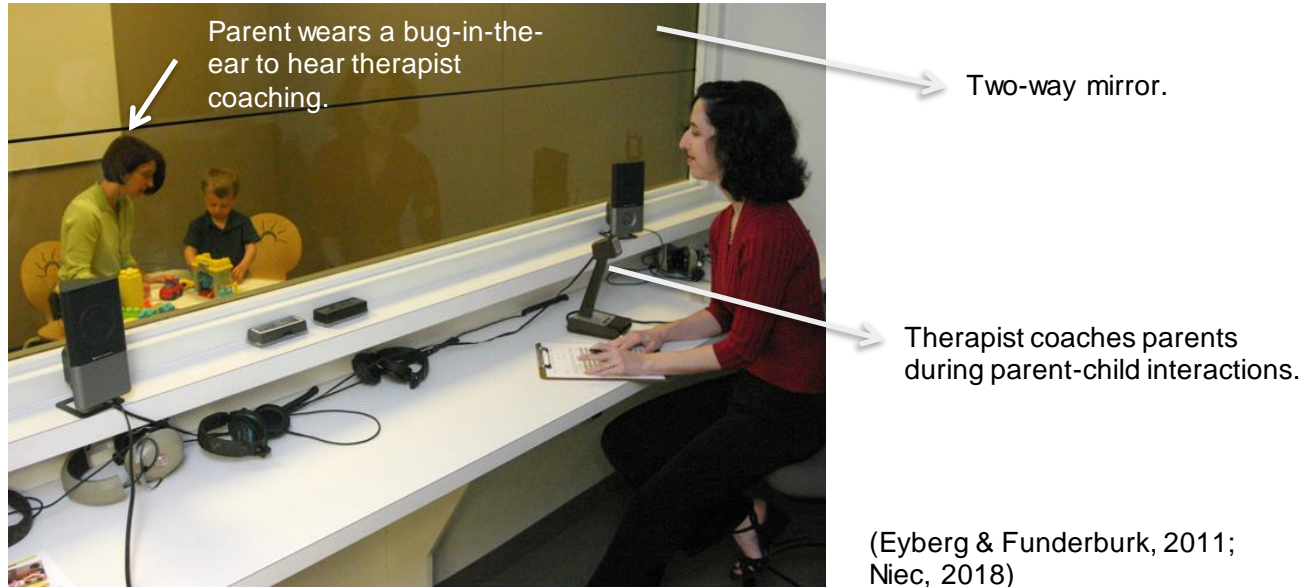
Model Overview

What is Parent-Child Interaction Therapy?

- A transdiagnostic behavioral family intervention for children 2.5 years – 7yrs
- Attachment based.
- Uses play to facilitate healthy interaction between parents and children

IN VIVO COACHING: Powerful Mechanism to Strengthen Parenting

PCIT = An evidence-based treatment with an innovative format



*Can also be done with a video setup

Why PCIT?

- **40 Years** of research supporting PCIT's effectiveness for children with DBDs
- **Transdiagnostic** – has demonstrated effectiveness for multiple diagnoses
- **Trauma Informed** – Endorsed by the National Child Traumatic Stress Network (NCTSN)

Goals of PCIT

- Build a warm, responsive relationship between parents and children
- Decrease disruptive behaviors in young children
- Increase prosocial behaviors in parents and children
- Through the parent-child relationship, builds resilience in children.

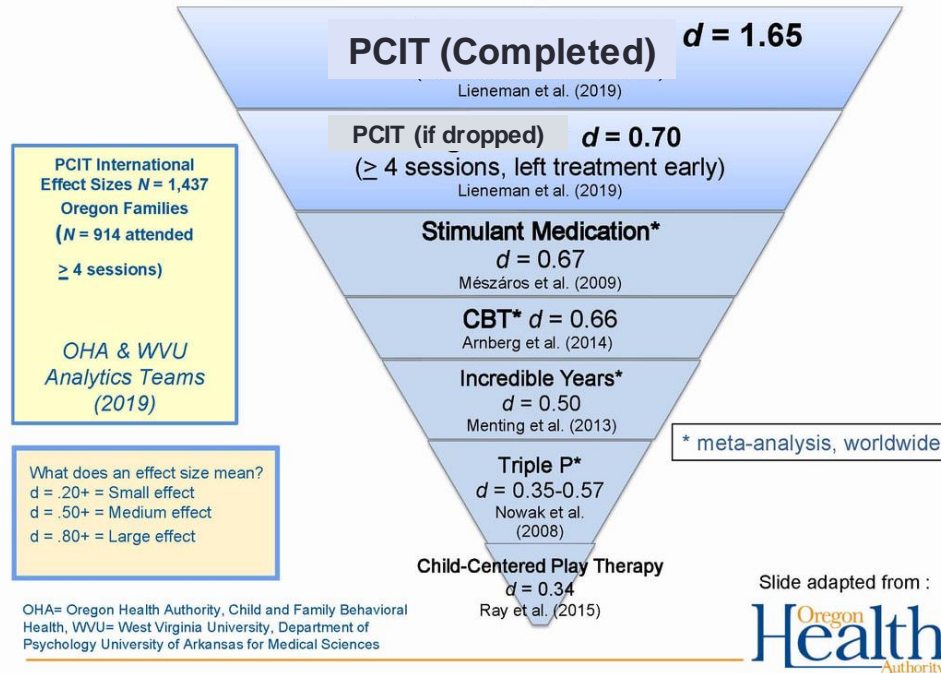




Outcomes (Abridged)



PCIT Shows Very Large Effects



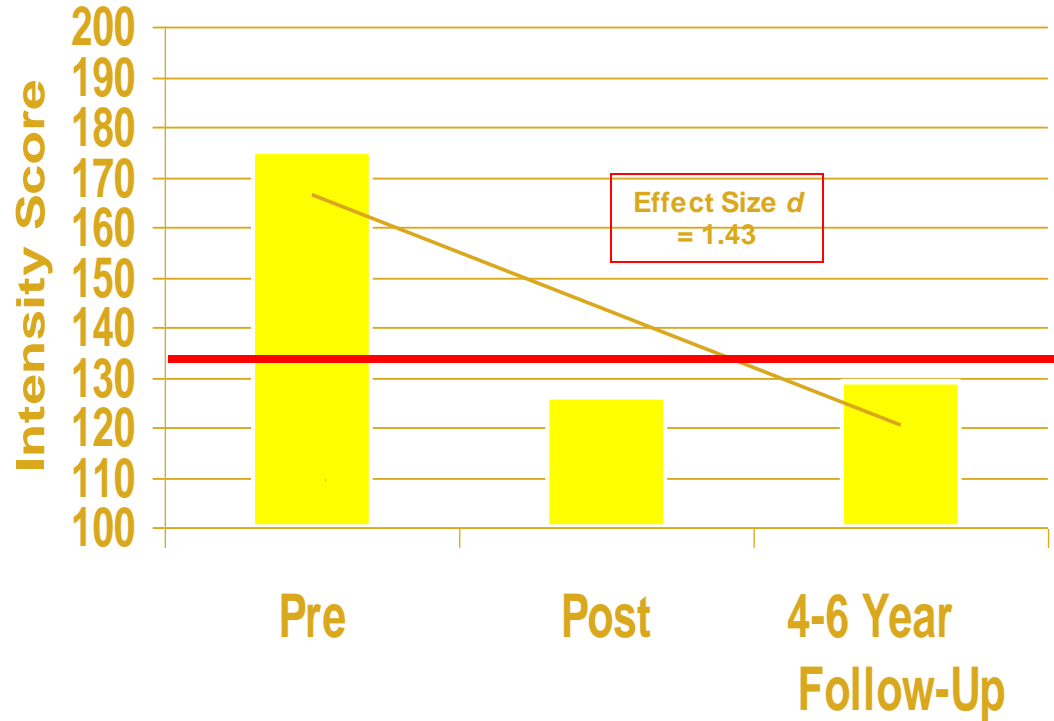
What makes parenting interventions work?

Parenting interventions work better when they...

1. **increase positive** parent-child interactions
2. **include the child in the session** with live practice of skills
3. teach parents to **use time-out** and to be consistent with limit-setting

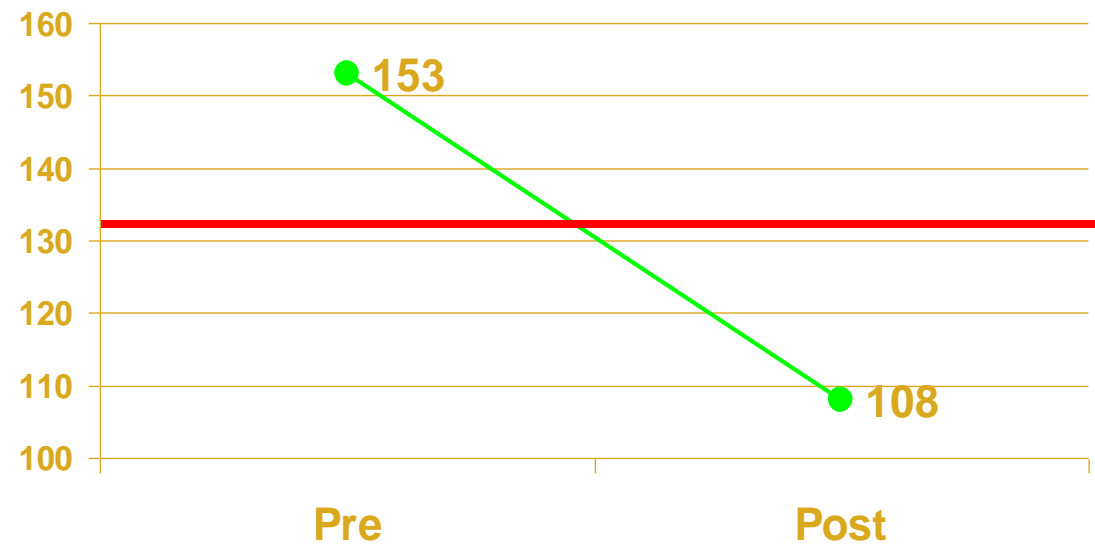
Kaminski et al., 2008

Parent-reported Child Conduct Problems ~ 4-6 Year Effect Size

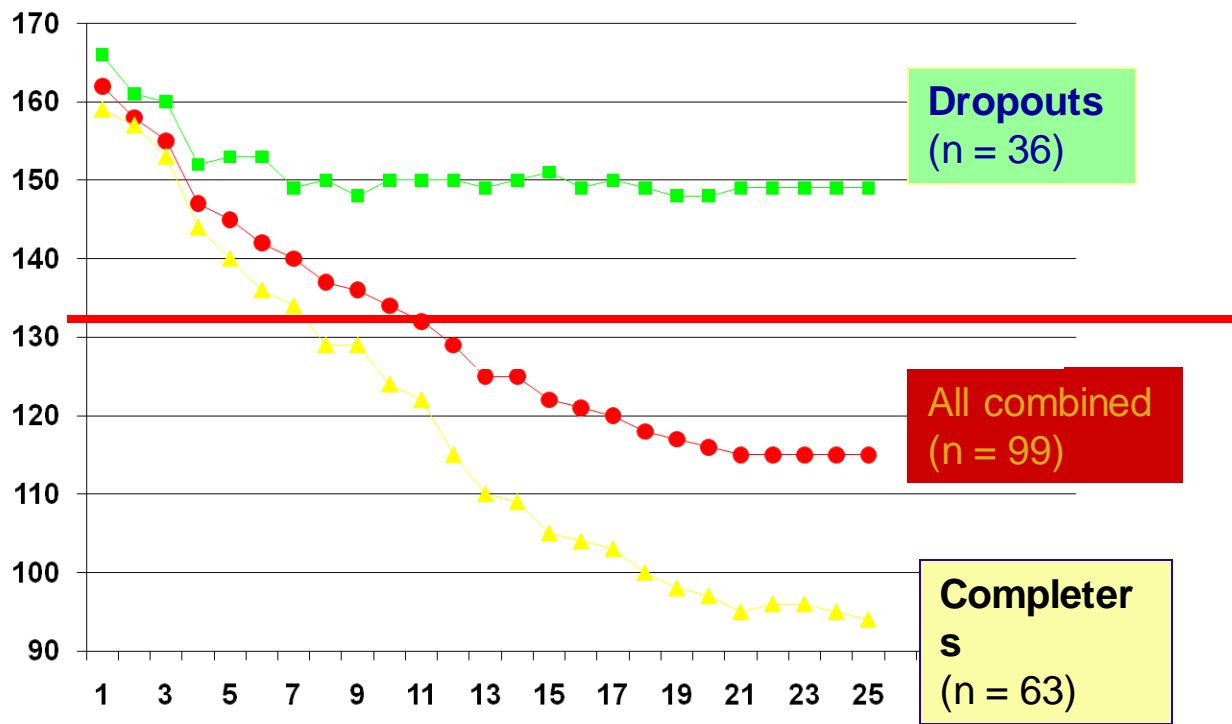




Teacher-reported Child Conduct Problems

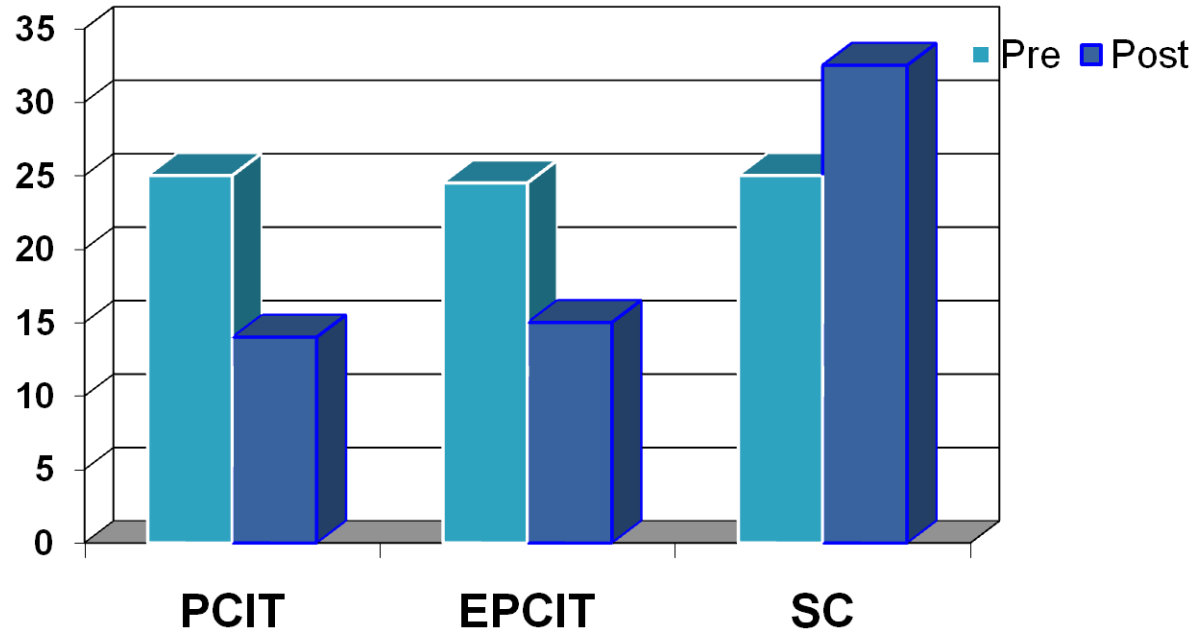


Weekly Child Conduct Problems





Abusive Parents' Negative Verbal and Physical Interactions



Chaffin et al., 2004

PCIT works around the world





Center for Workforce
Excellence in EBPs

Powered by NYU McSilver



Dissemination & Implementation



PCIT International (www.pcit.org)

- Founded by the developer of PCIT, Dr. Sheila Eyberg
- Develops and maintains the authorized, evidence-based protocol
- Maintains training requirements for therapists and trainers
- Administers the international certification process
- Coordinates & monitors large-scale dissemination efforts
- Multiple levels of trainers: e.g., Within-agency, Regional/Global

Training Readiness Checklist

- At least 2 clinicians with a master's degree & license in MH (or under the supervision of a licensed clinician), preference that one be a supervisor
- Supervisor(s) to support clinicians.
- Willingness to provide trainees with the time to learn PCIT.
- Referral stream of children 2.5 – 7yrs with disruptive behaviors/pathogenic parenting.
- Equipment to provide in vivo coaching & record sessions.
- CWE will provide a method for secure video transfer.
- Eyberg Child Behavior Inventory (ECBI), a required component of PCIT assessment.

Additional Readiness Requirements

Do agencies have...

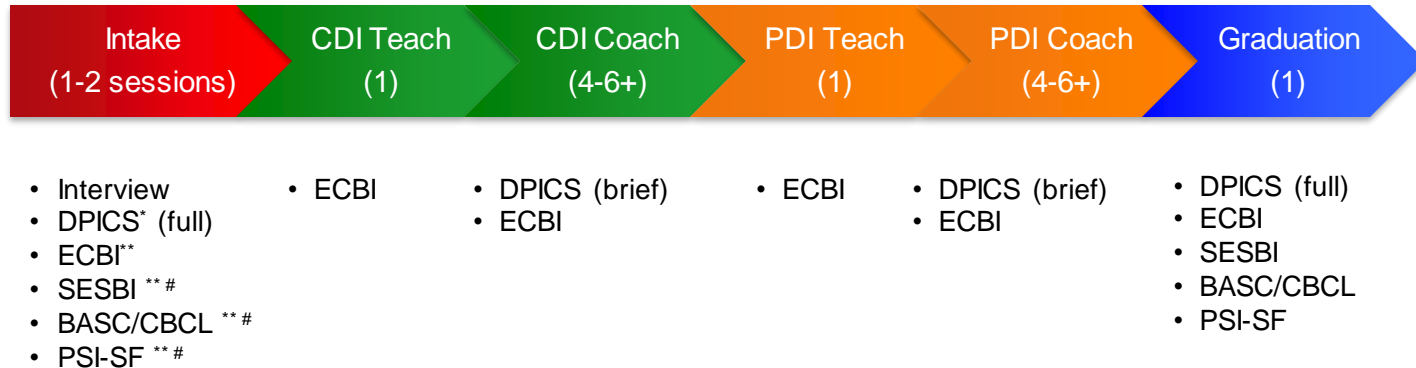
- The A/V equipment and/or two-way mirror necessary for in vivo coaching—or plans to install them *prior* to the training?
- Administrative support for implementation of the new program?
- Commitment to supporting therapists' national certification through PCIT International?

PCIT Training Requirements

- 40-hours of initial workshop (10 hours of asynchronous and 30 hours live training).
- Year-long, bimonthly live, remote group case consultation.
- Videos of therapy with adequate sound and sightlines.
- Range of competencies must be achieved to meet eligibility for PCIT certification.
- In addition to competencies, two PCIT cases successfully graduated.

PCIT Treatment Timeline with Assessment Tools

Measures are required, unless otherwise specified below.



*DPICS materials included with PCIT training.

**ECBI=Eyberg Child Behavior Inventory), SESBI=Sutter-Eyberg School Behavior Inventory, BASC=Behavior Assessment System for Children-Parent-Report, CBCL=Child Behavior Checklist-Parent Report – are available for purchase online.

#Recommended but optional measures



Equipment

- Earpiece
- Microphone
- Speakers
- Camera

CWE will provide guidance around recommended equipment.



Funding

- Enhanced rate Components
 - Reduced productivity- accounts for training, extra staff supervisory hours, paperwork and enhanced assessment
 - Enhanced expectations of supervisor
 - Enhanced funding for clinicians and supervisors once credentialed
- CWE
 - All training and supervision
 - Costs of credentialing
 - Assessment tools
 - Replacement therapists



Evaluation Expectations

- Your feedback and input is important to us! This is a new initiative and we want to know what works and doesn't work to inform future programming.
- Expectations:
 - Online survey during the first training session
 - Training satisfaction survey at the end of the trainings
 - A series of online follow-up surveys (every 6 months) for clinicians and supervisors
 - Participation in focus group discussions during a LC session



Immediate Next Steps

- Request application at OMH-Childrens-Designation@omh.ny.gov
- Participate in Office Hours on 6/22 @ 12pm if needed
 - Submit questions in advance to cwe.info@nyu.edu
- Submit Application on or prior to 7/10.

Q&A



Thank you!

<https://www.centerforworkforceexcellenceinebp.org/>

Cwe.info@nyu.edu